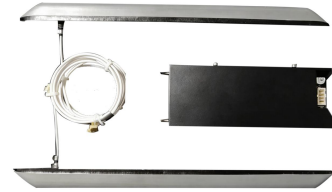


UAC-750S

Single-beam Side Scan Sonar 750kHz



Overview

The UAC-750S Side Scan Sonar is an embedded single-beam system designed for integration with USV, ROV and AUV/UUV. It is engineered for underwater engineering inspections, emergency search and rescue, and salvage operations.

Key advantages include high-definition imaging, compact form factor, low power consumption, and integrated data storage. The professional HD Sonar software is user-friendly, featuring navigation display, track planning, target management, and waterfall display, with full support for secondary development via SDK.

Technical Specifications

SPECIFICATIONS	Parameter
Operating Frequency	750 kHz (Center), 60 kHz (Bandwidth)
Beam Angle	0.25° Horizontal , 36° Vertical
Maximum Detection Range	75m (Per Side) / 150m (Total Swath)
Range Resolution	1.5 cm
Max Operating Depth	500m (Customizable)
Max Survey Speed	5 knots
Communication	100M/1000M Adaptive Ethernet
Power Consumption	18-36 VDC, 10W (Typical)
Transducer Dimensions	482mm × 40mm × 40mm (Single Side)
Electronics Module	145mm × 85mm × 40mm
Weight	Transducer: 500g (Side) / Electronics: 400g
Software & SDK	HD Sonar software / SDK for secondary development

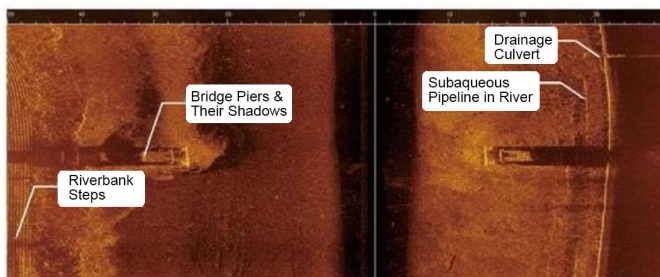
Key Features

Superior Imaging: High-clarity sonar imagery for precise identification.

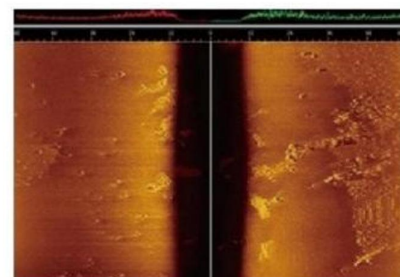
Compact & Efficient: Small footprint and low power consumption for easy integration.

Independent IP: Fully self-developed hardware and software with complete intellectual property rights.

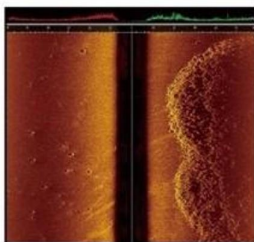
Imaging



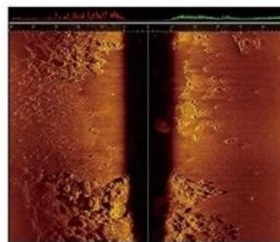
River Channel Survey Imaging



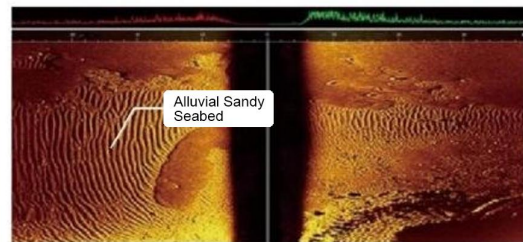
Flat Seabed Imaging



Seabed Survey Imaging



Seabed Survey Imaging



Alluvial Sandy Seabed Imaging

Applications



Hidden pipeline and outfall investigation



Port, harbor, and riverbed surveying and imaging



Emergency search, rescue, and salvage missions